



G e n e r a l P a c k a g i n g

Palletizing / Depalletizing Systems

Model 537



FOCKE & CO

TOMORROW'S TECHNOLOGY TODAY

Focke & Co., one of the world's leading manufacturer of packaging machinery, was founded in 1955 by Dr. Heinz Focke in Verden, Germany. His passion for quality and

attention to detail in every aspect of the manufacturing process – from design to engineering to installation, training, and support has resulted in some of the

world's most successful packaging machinery. The same standard of excellence on which Focke & Co. was founded is embraced by its employees worldwide, ensuring creative and reliable solutions to your packaging machinery requirements. With over 11,000 machines shipped to hundreds of facilities in over 70 countries, the name of Focke & Co. is synonymous with performance and high efficiency.

End of Line Systems

- 445 Tray / Tray with Hood / Wrap-around Packer
- 484/486/488 Horizontal Case Packer
- 487 Vertical Case Packer
- 491 Top Load Case Packer
- 537 Palletizer



End of Line System

Palletizing/ Depalletizing System

537

With a Focke & Co. Palletizing System a wide variety of palletizing tasks can be solved. In combination with the well-known Focke & Co Case Packers it

allows a cost effective integration to turn-key End of Line Systems. For different applications, Focke & Co can rely on hundreds of successful installations world-wide.

Technical Data

- Multi-axis vertical articulate arm robot from FANUC Robotics
- Standard controls for periphery based on Siemens or Allen-Bradley
- Polycarbonate guarding with aluminium profile or expanded metal
- Simple operation and generation of pallet patterns with Pallet Tool / Pallet Pro (optional)
- Optional use of slip sheets, cold glue for pallet fixation, etc.

Key Advantages

- Wide variety of proven gripper tools and peripheral equipment
- Simple and cost-effective integration with other Focke & Co. machines
- Integration of turn-key-systems by Focke & Co. Project Department

Performance

- The performance of a palletizing system depends on the actual application and the configuration of the complete system. Data for your specific application can be determined upon request.



FOCKE & CO

TOMORROW'S TECHNOLOGY TODAY



FANUC Robotics

Perpetual Motion

Core of the palletizing system are proven FANUC articulate arm robots, which can be integrated with various peripheral equipment.

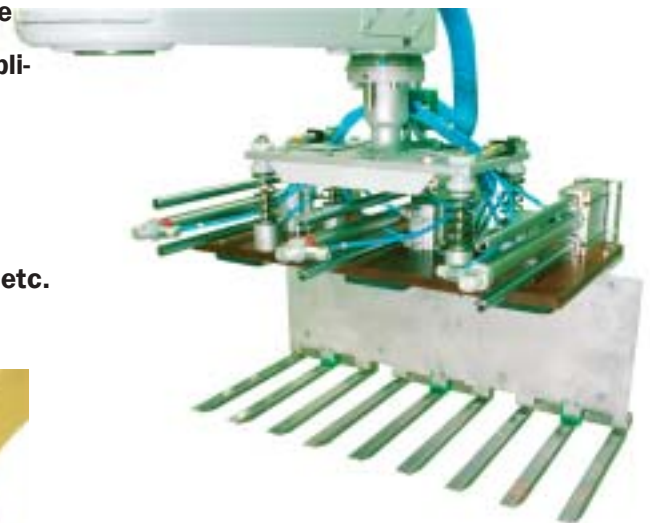
Flexibility

The flexible palletizing system is able to meet your requirements and can be used for handling different products such as cases, trays, shrink-wrapped

bundles, bags etc.

Various pick-up heads are available to suit your applications:

- Suction heads
- Grippers
- Combinations of both, etc.



Gripper and suction heads with quick exchange features will be adapted individually to the product and application.

End of Line System

Palletizing/ Depalletizing System

537

Case/product orientating devices to achieve optimum pallet utilization as well as stack stability are available:

- turning devices & tipping devices
- mergers etc.

All elements can be combined in a modular way, ranging from a simple floor loaded pallet with one or two infeeds through grouping devices to complex, fully automatic pallet exchange systems.

Case/Product Orientation

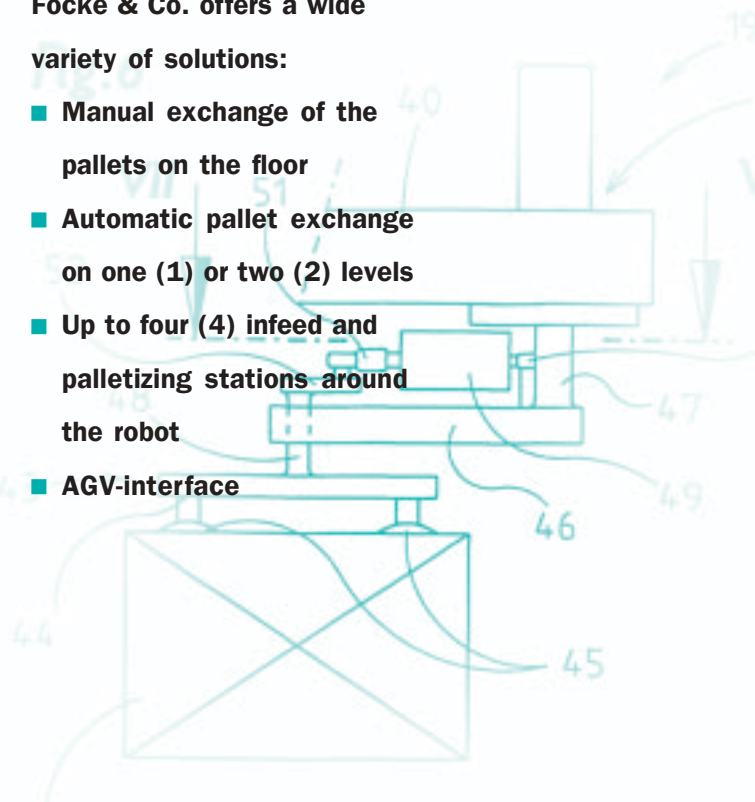


Pallet Exchange Systems



Focke & Co. offers a wide variety of solutions:

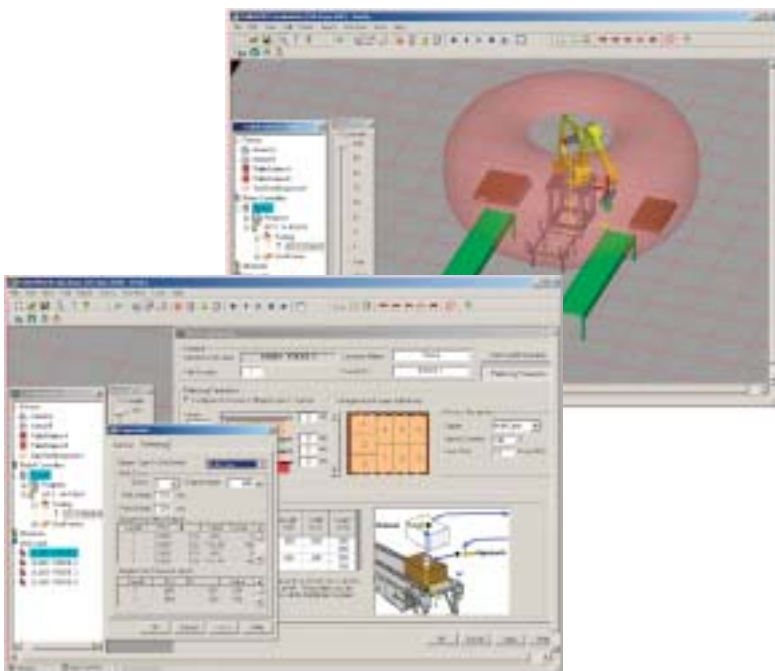
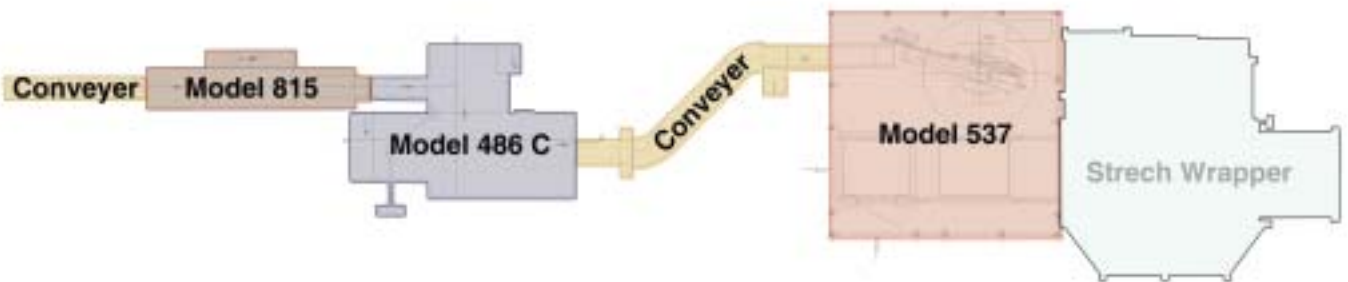
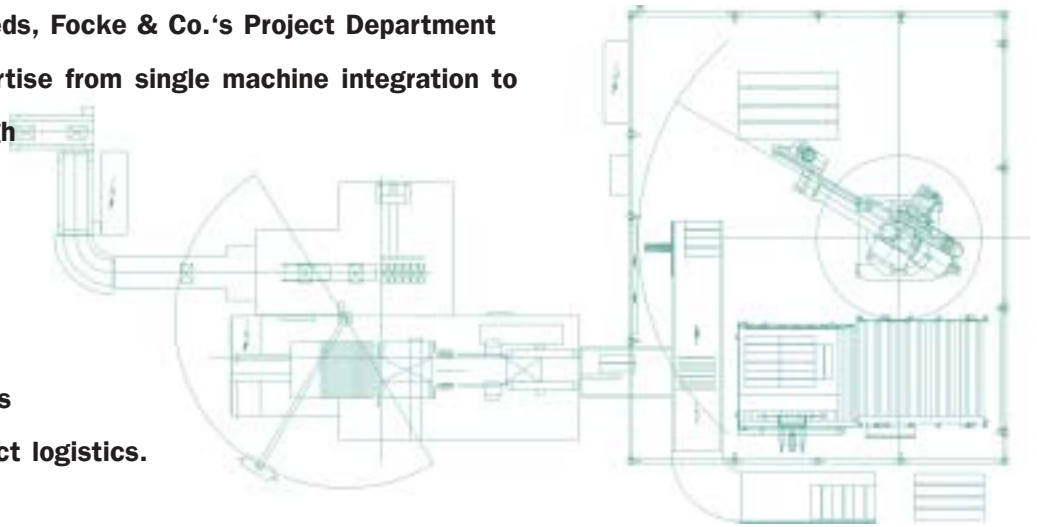
- Manual exchange of the pallets on the floor
- Automatic pallet exchange on one (1) or two (2) levels
- Up to four (4) infeed and palletizing stations around the robot
- AGV-interface



FOCKE & CO

Turnkey Solutions

For meeting customers needs, Focke & Co.'s Project Department provides professional expertise from single machine integration to End of Line Systems through complete layouts for production facilities. Each layout incorporates all aspects of mechanical and electrical interfaces as well as material and product logistics.



User Friendliness

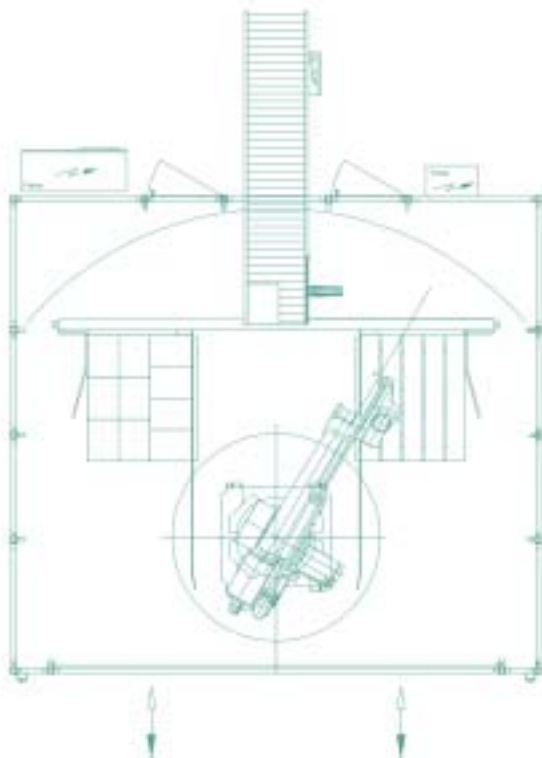
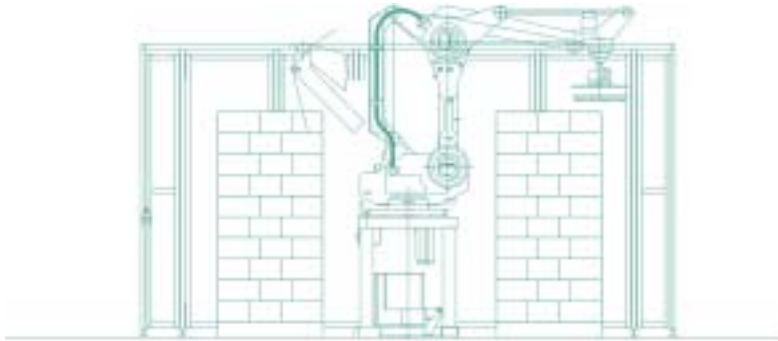
OFF-LINE programming software supports uncomplicated automatic or manual creation of palletizing patterns. It generates the robot motions depending on the machine layout. In addition, it supplies the PLC-interface signals to the pick-up head and product orientation devices.

End of Line System

Our project department can offer complete layouts for production facilities including product handling logistics and computer simulation of product flow through the system.

Palletizing/ Depalletizing System 537

Technical Data & Basic Layout



Pallet sizes:

all standard pallets i.e.

800 x 1200 mm or

1000 x 1200 mm

other sizes on request

All specifications are subject to technical changes.



FOCKE & CO

TOMORROW'S TECHNOLOGY TODAY



**WORLD HEADQUARTERS
VERDEN - GERMANY**



**FINKENBERG
VERDEN - GERMANY**



BERLIN - GERMANY



BARSEL - GERMANY

GERMANY

Focke & Co. (GmbH & Co.)
Siemensstraße 10 - 27283 Verden
Postfach 1369 - 27263 Verden
Telephone int. +49 4231 8910
Telefax int. +49 4231 5061 and 3461
E-mail: sales@focke.de

United Kingdom

Focke & Co. (UK) Ltd.
Courtenay Works,
Monument Way East,
Woking, Surrey GU21 5LY
Telephone int. +44 1483 756094
Telefax int. +44 1483 756099
E-mail: fockeuk@btconnect.com

North America

Focke & Co., Inc.
5730 Millstream Road
Whitsett, N.C. 27377 979202
Telephone int. +1 336 449 7200
Telefax int. +1 336 449 0674
E-mail: sales@fockeGSO.com

U.S.A.

Focke & Co. Inc.
P.O. Box 546
228 Route 17 North
Upper Saddle River / N.J. 07458
Telephone int. +1 201 825 8440
Telefax int. +1 201 327 7675
E-mail: Fockerl@aol.com

Brasil

Focke do Brasil Ltda.
Av. Carlos Gomes, 141
7º Andar/Conj. 707
Bairro Auxilladora
Porto Alegre, RS
90480-003 Brasil
Telephone int. +55 51 3328 6551
Telefax int. +55 51 3328 6553
E-mail: focke_br@zaz.com.br



**U.S.A. HEADQUARTERS
GREENSBORO - NORTH CAROLINA**

Russia

Focke & Co., Moscow
Skakovaja, 9
125040 Moscow/Russia
Tel: +7 095 945 2743
Fax: +7 095 945 2677
E-mail: Fockemos@ktv.ru

Singapore

Focke (Singapore) Pte. Ltd.
No. 3 Toh Tuck Link
German Districentre # 02-02
Singapore 596228
Telephone int. +656 468 9227
Telefax int. +656 468 9557
E-mail: fockesg@starhub.net.sg

Japan

Japan Branch of Focke (Hong Kong) Ltd.
Tennoh-Cho 1133-1
Hamamatsu-City, Shizuoko-ken
435-0052 Japan
Telephone int. +81 53 466 3111
Telefax int. +81 53 465 0300
E-mail: Focke@mail.wbs.ne.jp

China

Focke (Hong Kong) Ltd.
Unit B, 7th Floor
Shell Industrial Building
12 Lee Chung Street
Chai Wan, Hong Kong
Telephone int. +852 2897 6260
Telefax int. +852 2897 4720
E-mail: fockehk@netvigator.com